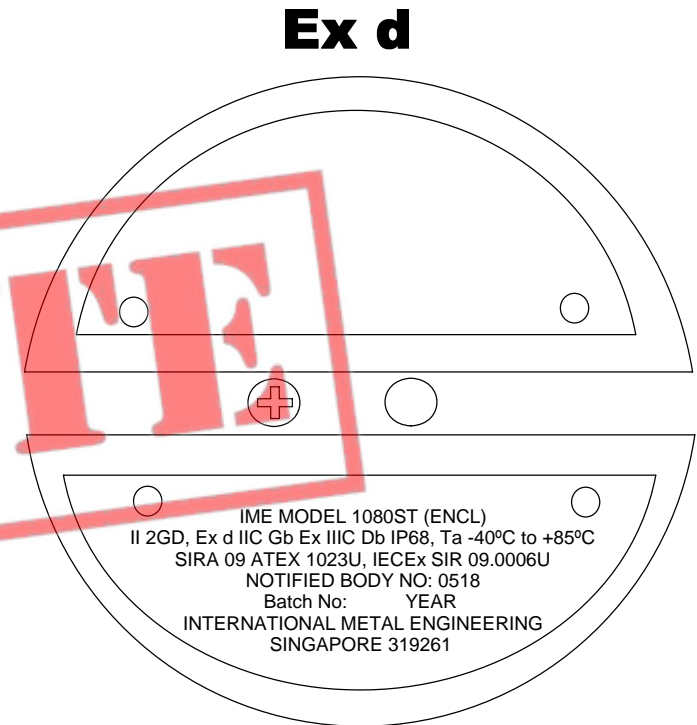
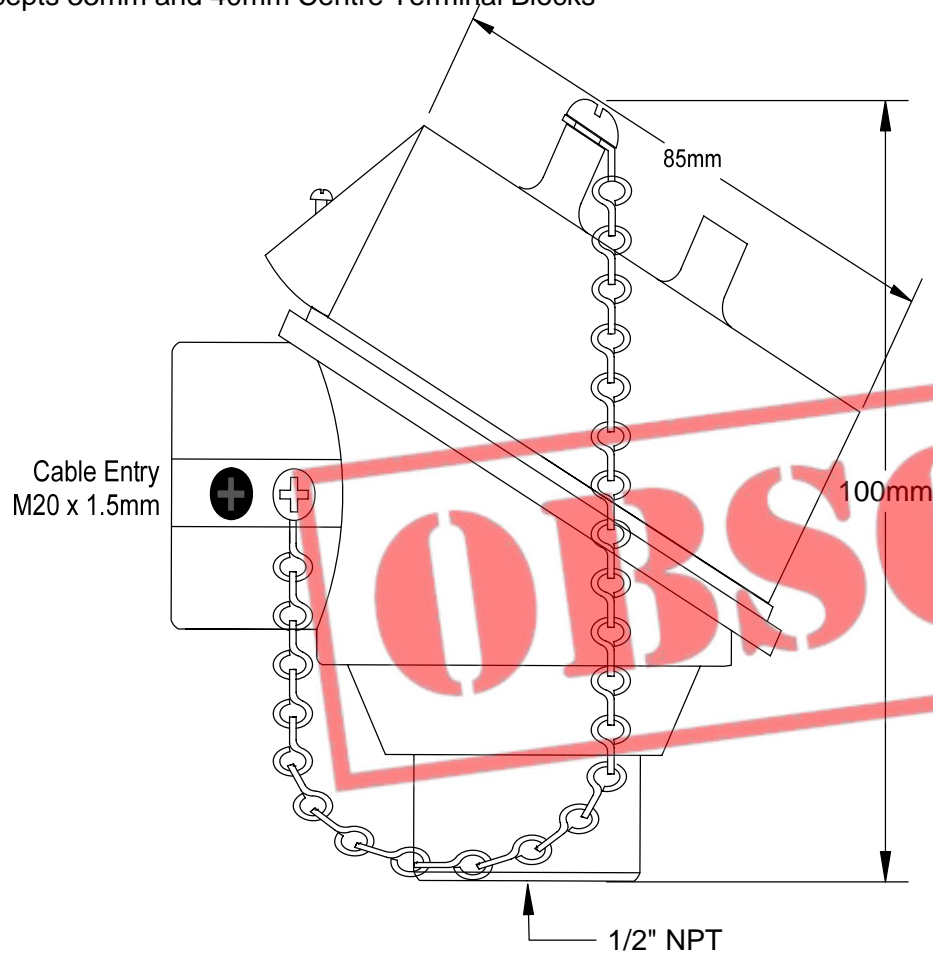


# Ex d Head Flameproof and Dust (DIP) - 316 Stainless Steel Terminal Head

Ex d Flameproof and DUST (DIP)  
**Suitable for use with approved IECEx Certified thermocouple /RTD Sensors**  
 Terminal Blocks or Transmitters  
 Accepts 33mm and 40mm Centre Terminal Blocks

**LABELLING FOR Ex d TERMINAL  
 ENCLOSURE SERIES 1080  
 USED AS A COMPONENT  
 Part No. TC20EXD1SS**



IME MODEL 1080ST (ENCL)  
 II 2GD, Ex d IIC Gb Ex IIIC Db IP68, Ta -40°C to +85°C  
 SIRA 09 ATEX 1023U, IECEx SIR 09.0006U  
 NOTIFIED BODY NO: 0518  
 Batch No: YEAR  
 INTERNATIONAL METAL ENGINEERING  
 SINGAPORE 319261

**316 stainless steel – Ex d Flameproof and dust (DIP)**  
**IME - IECEx Flameproof Ex d Terminal Head only – Cable entry M20**  
**Ex d IIC Gb / Ex tb IIIC Db IP68 Ta = -40°C to 85°C**  
**Certificate No. IECEx SIR 09.0006U**  
**Series. 1080**  
**Part No. TC20EXD1SS**  
**As per Certificate 1488**

<b>TEMPERATURE CONTROLS PTY LTD</b>		Certificate No: QEC 14412 ISO 9001:2008	
<b>CONDITIONS</b> THIS DRAWING IS OUR EXCLUSIVE PROPERTY AND MUST NOT BE COPIED OR HANDED TO ANY OTHER PARTIES WITH OUT WRITTEN PERMISSION. IT SHALL BE RETURNED UPON REQUEST	SYDNEY : 7 YAMMA ST SEFTON , NSW 2162 PHONE : (02) 9721 8644 FAX : (02) 9738 9339		
	MELBOURNE : 8/280 Whitehall St YARRAVILLE VIC 3013 PHONE : (03) 9687 0000 FAX : (03) 9687 1900 EMAIL : sales@temperature.com.au		
	TITLE <b>SERIES 1080</b> <b>P/N TC20EXD1SS</b>		
	SIZE : A4	DATE : 05/08/11	
SCALE : NTS	DRAWING BY R.B	<b>REV : 01</b>	